



AlphaVision[®]

A new view of reproduction





Imaging is used in animal insemination



The world leader in reproductive biotechnologies, IMV Technologies, has modernized animal insemination with AlphaVision.

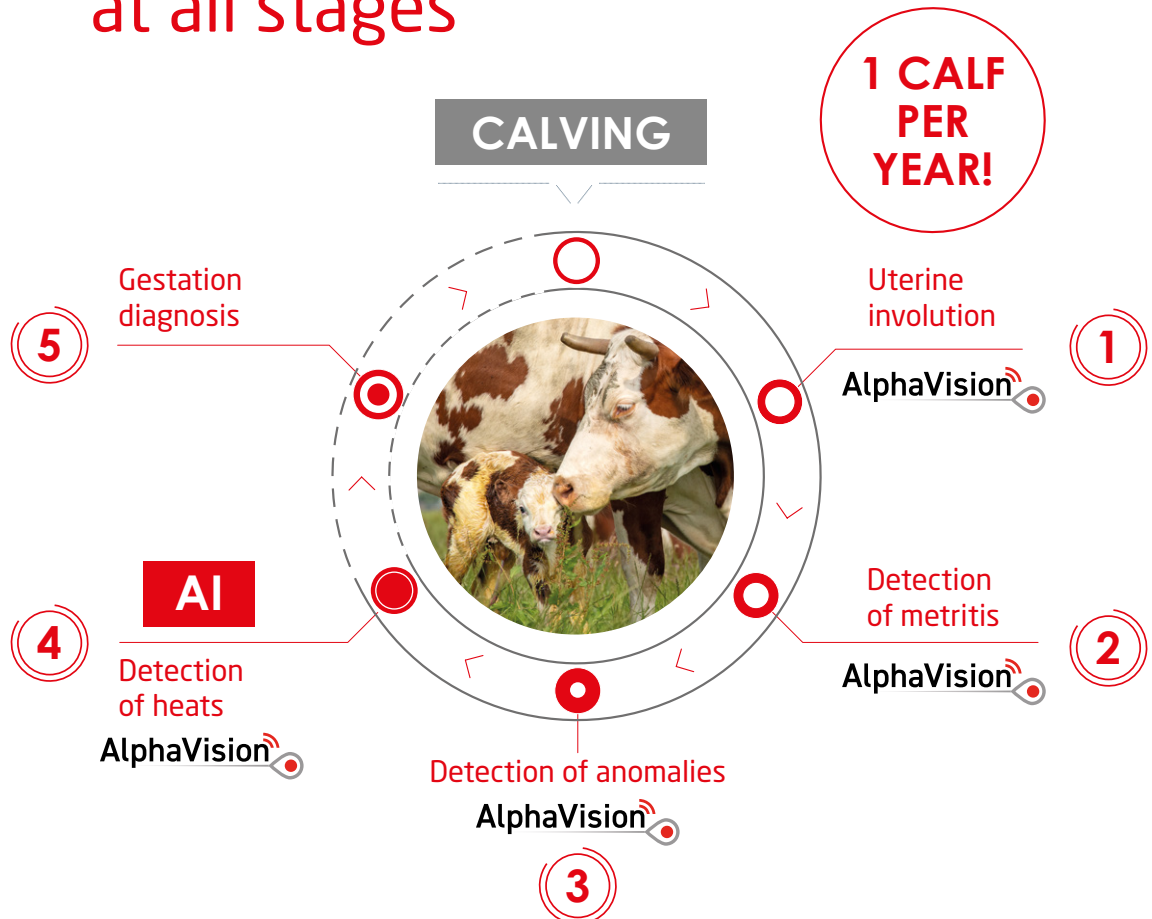
This insemination gun features a miniaturized, high-definition, waterproof, illuminating camera used to view the cervix.

The image is transmitted to a smartphone or BUG viewing devices and tablets.

This major innovation, which instantly displays the cervix, makes it easier to perform the act of insemination, especially on cows that are difficult to inseminate.

This endoscopic function also allows an early visual diagnosis of any clinical anomaly. It can, for instance, be used to monitor uterine involution and detect early metritis. The case contains a treatment sheath to facilitate the application of the treatment.

For optimized reproduction at all stages



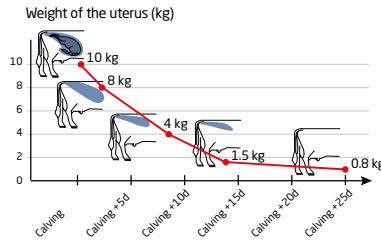
1 Uterine involution

No gestation without correct uterine involution!

Uterine involution: the moment when the uterus returns to its normal size and weight after calving.

After calving, around 30 days are necessary to obtain full uterine involution.

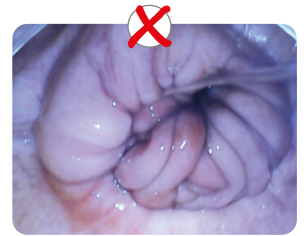
A delay can have a strong impact: up to **-20%** on the success rate.



(<https://www.natural-techna.com/fr/reproduction/ruminant/retards-involution-uterine-vache-laitiere>)



Proper CERVICAL involution



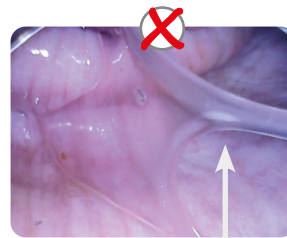
CERVICAL involution under way

2 Detection of metritis

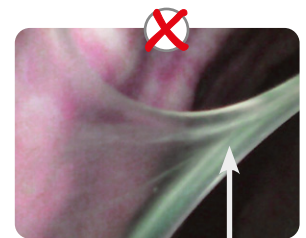
Undiagnosed METRITIS cause a decrease in fertility.

	Without endometritis	Endometritis
Conception on first breeding	45.7%	38.5%

1600 cows, Australia



MILD metritis



MILD metritis

Making an early diagnosis

AlphaVision allows the early detection of gynecological anomalies: bleeding, malformation of the cervix, infections such as metritis, etc. as well as speedy treatment of these problems. AlphaVision makes it possible to capture images and confirm a diagnosis remotely.

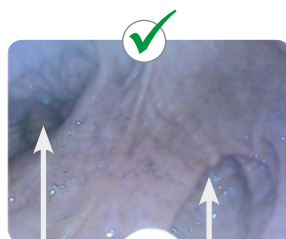
3 Detection of abnormalities

Importance of detecting ABNORMALITIES for decision-making.



Membrane

➔ Insemination possible and facilitated with AlphaVision



Double cervix



Cysts

➔ Insemination possible

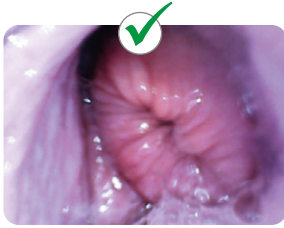


Urovagina

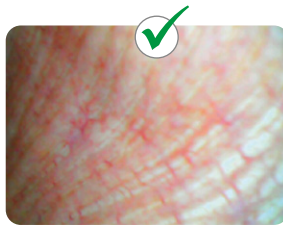
➔ Insemination not advised

4 Detection of heats and insemination

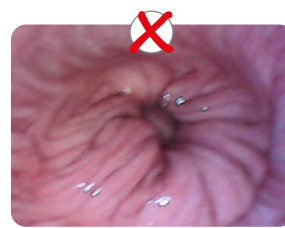
The ability to be 100% sure if a cow is in HEAT!



In heat, because mucus present



In heat, vascularization of the vaginal wall



Not in heat, no mucus present

➔ Insemination possible and facilitated with AlphaVision

➔ Insemination not advised

- > Confirm that the cow is ready to be inseminated
- > Facilitating secure insemination
- > Ensure technician comfort and animal well-being
- > Save time in complete safety



“



Testimonial

The AlphaVision is used for **post-calving monitoring** to **detect metritis and uterine involution**. 15-day, 30-day, 40-day checks. On a cow with metritis, antibiotic treatments are made using a **treatment sheath**. When I see that there is no metritis and that the involution is complete, the cows can be bred at 40 days.

When you are away, someone else can inseminate with AlphaVision. The cow does not move at all, it does not **hurt her**. The advantage is that it has a soft plastic tip. AlphaVision is much easier to handle because **there are no more wires and it is easier to assemble**.

On the application you can write the number of the cow, if the involution is completed, if there are metritis or anomalies other than metritis. **All traceability information is saved on your phone**. For the whole herd, we went **from 420 days between calving to 365 days**.”

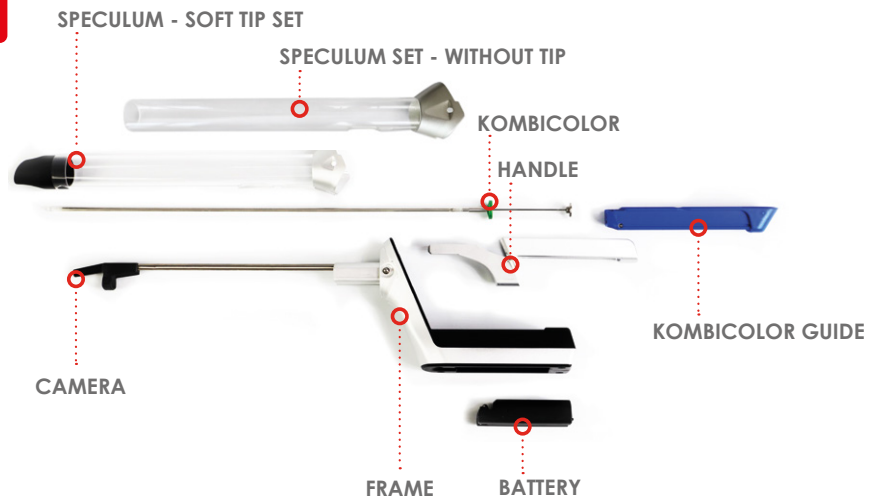
Patrick Bovis
Cattleman

Find all the testimonials on www.alphavision-imv.com/témoignages/

TECHNICAL SPECIFICATIONS

AlphaVision

- High quality definition
- Wifi connection (no network required on the farm)
- Quick assembly
- Handy, ergonomic
- Sanitary liner and clippable speculum for easy cleaning
- Metal applicator included for easy treatment
- Compatible with smartphone or bugs viewing device or tablet
- Traceability of photos and biological data of the cow through the application



AlphaVision case Ref. AV2-SYSTEM-01

Included

- **1 AlphaVision system** with high-definition waterproof miniature camera
- **2 speculum units**, with and without soft tip
- **2 extensions** for attachment to the Kombicolor insemination gun (MEC09-015)
- **2 Kombicolor insemination guns**
- Ref. 018398/018400
- **50 Alpha sheaths** - Ref. 024485
- **1 straw cutter** - Ref. 005233
- **1 bottle of B-LUBE gel** - Ref. 023917
- **150 sanitary shirts** - Ref. 029401
- **1 treatment sheath** - Ref. ACC-OPTISOIN-AV
- **1 charger** for the AlphaVision battery
- Ref. ESG-CHARGER
- **2 batteries** - Ref. ESG-BATT
- **1 transport case** - Ref. PAK15041

Options

- Glasses Ref. BUG-VGA:GO
- Telephone holder Ref. ACC-CHEST HARNESS
- Belt Ref. ACC-BELT-AV





Robert Cassou
Bovine straw inventor



France HQ

IMV Technologies
ZI n°1 Est
61300 L'Aigle

+33 2 33 34 64 64
contact@imv-technologies.com
www.imv-technologies.com

South Africa

North America

IMV Technologies USA
9501 Louisiana Ave N, Suite 300
Brooklyn Park, MN 55445

+1 763 488 1881
contact@imvusa.com
www.imv-technologies.com

Russia

Brazil

IMV Technologies Brazil
R. Vitoriano dos Anjos, 1081
13041-317 Campinas-SP

+55 (19) 2513-3444
contato@imvbrasil.com.br
www.imv-technologies.com

China

IMV Technologies China
Room 510, Building 1,
NO.800, Naxian Road,
Pudong District, Shanghai,
201203 China

+86 21 50586918 or 50586948
www.imvchina.com
contact@imvchina.com

India

IMV Technologies India
(IMV India Pvt. Ltd.)
Plot No 750 Phase V, Udyog Vihar
Girgaon 122016 (Haryana)

+91 124 4770707
www.imvindia.com
contact@imvindia.com

The Netherlands

Nifa Technologies
Pallasweg 22
8938 AS Leeuwarden

+31 58 2123279
www.nifa.nl
info@nifa.nl

